



AUTOMATIC SCRUBBERS - WALK BEHIND

CT51

The CT51 is one of IPC's newest machines, featuring many of our new innovations. The machines offer very high productivity with long run-times. They offer four interchangeable heads, making them very versatile machines.

MOST FREQUENT USE



MAX PRODUCTIVITY

17,000 -
25,000 h

BATTERIES RUNNING TIME

1.8 - 3.5 h

KEY SPECS

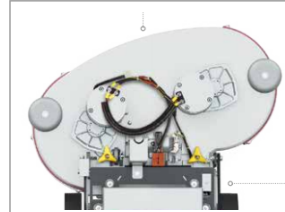
13/ 14 gal
20" brush and
20", 24", 28"
traction drive



ADJUSTABLE HANDLE FOR A COMFORTABLE AND EASY USE



FULL MACHINE CONTROL DUE TO INTUITIVE CENTRAL KNOB



EASY ACCESS, NO TOOLS REQUIRED



INTER-CHANGEABLE BRUSH HEAD



SLST™ SELF LEVELING SYSTEM



ANC™ ADVANCE NOISE CONTROL



ECO SELECT



MEMORY CARD



TELEMATICS GPS



600 RPM INTERCHANGEABLE BRUSH HEAD

4 INTERCHANGEABLE BRUSH HEADS



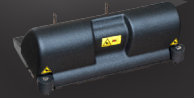
20- 22 in SIZE



24 in SIZE



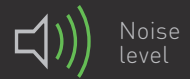
28 in SIZE



CYLINDRICAL
(FOR XP VERSION)



ANC™ ADVANCED NOISE CONTROL



ECO SELECT

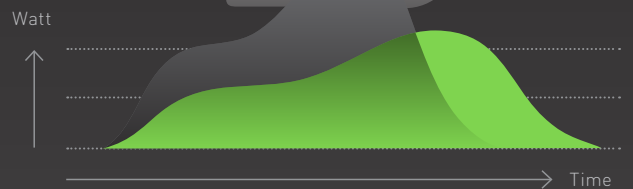


Maintenance Costs

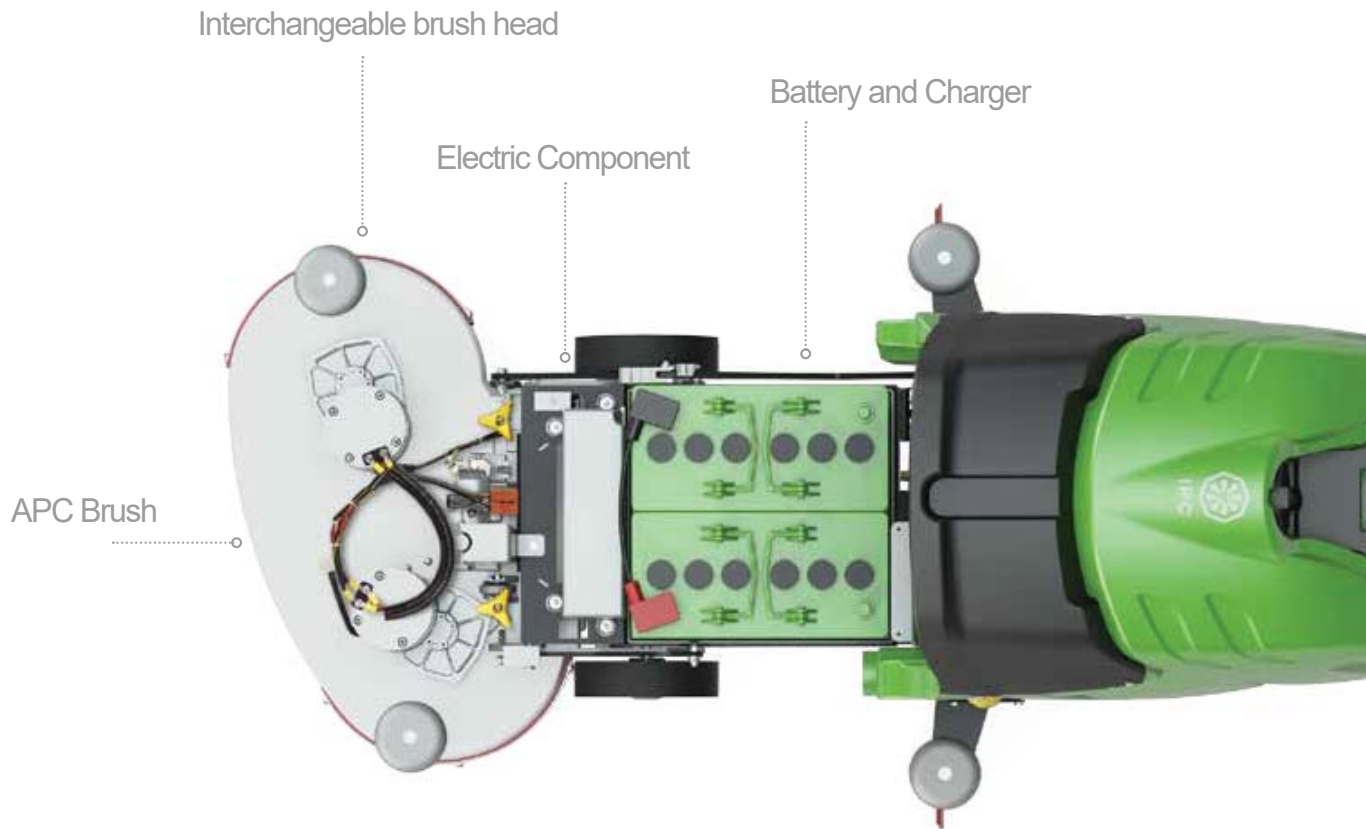
SAVE UP TO
20%

+20%

Eco Select permits to decrease energy consumption and increase running time by 20% in every day cleaning operations. Noise level is down to 62Db allowing cleaning operations even in sensitive areas. Programmed maintenance is longer with consequent cost reduction.



CT51



Other Features

- (CFS) Central Flow System solution distribution from brush center
- CWS (Constant Weight System) ensures maximum scrubbing results
- Exclusive squeegee system assures high performance at low cost
- High quality/ high performance vacuum motor
- Great maneuverability due to optimum weight distribution
- Squeegee blade can be used on 4 sides before replacement
- Easy access to internal components
- Designed to assure minimum noise levels
- Battery level indicator
- On board charger and external battery charger plug
- Inlet and outlet filters for maximum tank protection
- AFS (Anti Foam System) and shut off sensor protect vacuum
- Squeegee assembly and blade replacement without tools

CT51 TECHNICAL SPECIFICATIONS



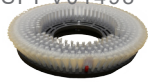
Code	CT51B50	CT51BT50	CT51BT60	CT51BT70
Max theoretical productivity	17,000 ft ² / 1,570 m ²	19,000 ft ² / 1,765 m ²	23,000 ft ² / 2,135 m ²	27,000 ft ² / 2,510 m ²
Cleaning Path	20 in/ 500 mm	20 in/ 500 mm	24 in/ 600 mm	28 in/ 700 mm
Squeegee Width	32 in/ 815 mm	32 in/ 815 mm	32 in/ 815 mm	33 in/ 840 mm
Water tank capacity	13/14 gal - 51/53 l	13/14 gal - 51/53 l	13/14 gal - 51/53 l	13/14 gal - 51/53 l
Max running time	210 min	210 min	210 min	210 min
Voltage	24V (2x12)	24V (2x12)	24V (2x12)	24V (2x12)
Installed power	780 W	980 W	1380 W	1380 W
Max speed	2.2 mph/ 3.5 kph	2.2 mph/ 3.5 kph	2.6 mph/ 4.2 kph	2.6 mph/ 4.2 kph
Brush pressure	39 lbs/ 18 kg	39 lbs/ 18 kg	39 lbs/ 18 kg	51 lbs/ 23 kg
Weight	502 lbs/ 228 kg	502 lbs/ 228 kg	522 lbs/ 237 kg	516 lbs/ 234 kg
Dimensions	52 x 41 x 22 in	52 x 41 x 22 in	50 x 41 x 27 in	51 x 41 x 29 in

AVAILABLE ACCESSORIES

PAD DRIVER
SPPV00317



NYLON BRUSH
SPPV01498



TYNEX BRUSH
SPPV29554



NATURAL BRISTLE BRUSH
SPPV01502



CHEM DOSE KIT
KTRI00763



12V115 AH
12V115



12 V 145 AH
12V145



12 V 155 AH
12V155



12V 100 AGM
12V100-AGM



12V115 AGM
12V115-AGM



12V140 AGM
12V140-AGM



SPLASH GUARD 20"
KTRI05244



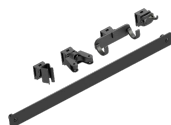
BATTERY WATERING SYSTEM
CR-BWS-S-2



SQUEEGEES
PMVR02237 (COMPLETE)
MPVR08039 (FRONT)
MPVR08039 (REAR)



TOOL BAR
KTRI04848



EXTERNAL SUCTION KIT
KTR02257



AUTO- REFILL SYSTEM
KTRI00763



GET RIGHT SIZED

	Description	Continuous run-time	Theoretical ft ² / h	Maximum Theoretical ft ² /charge	Ft ² charge efficiency (70%)
CT51B50	Brush, 115ah Battery	1.8 h	16,811	30,260	21,182
CT51B50	Brush Drive, 145ah Battery	2.3 h	16,811	38,666	27,066
CT51B50	Brush Drive, 100 AGM Battery	2.0 h	16,811	33,623	23,536
CT51B50	Brush Drive, 115 AGM Battery	2.5 h	16,811	42,028	29,420
CT5B50	Brush Drive, 140 AGM Battery	3.5 h	16,811	58,840	41,188
CT51BT50	Traction Drive, 115ah Battery	1.5 h	19,277	28,916	20,241
CT51BT50	Traction Drive, 145ah Battery	2.0 h	19,277	38,555	26,988
CT51BT50	Traction Drive, 100 AGM Battery	1.8 h	19,277	34,699	24,289
CT51BT50	Traction Drive, 115 AGM Battery	2.1 h	19,277	40,482	28,338
CT51BT50	Traction Drive, 140 AGM Battery	3.1 h	19,277	59,760	41,832



IPC Eagle Corporation
3650 Dodd Road Eagan, MN 55123
800-486-2775
info@ipceagle.com