



IPC



VACUUM CLEANERS - DUST EXTRACTORS

# CYCLONE

the  $\mathbb{R}^n$  is a linear space over  $\mathbb{R}$  with the usual addition and scalar multiplication. The inner product is defined by

$$(x, y) = \sum_{i=1}^n x_i y_i \quad (1)$$

where  $x = (x_1, \dots, x_n)$  and  $y = (y_1, \dots, y_n)$  are vectors in  $\mathbb{R}^n$ . The norm of a vector  $x$  is defined by

$$\|x\| = \sqrt{(x, x)} = \sqrt{\sum_{i=1}^n x_i^2} \quad (2)$$

and the distance between two vectors  $x$  and  $y$  is defined by

$$d(x, y) = \|x - y\| = \sqrt{\sum_{i=1}^n (x_i - y_i)^2} \quad (3)$$

where  $x = (x_1, \dots, x_n)$  and  $y = (y_1, \dots, y_n)$  are vectors in  $\mathbb{R}^n$ . The distance between two points  $x$  and  $y$  in  $\mathbb{R}^n$  is defined by

$$d(x, y) = \sqrt{\sum_{i=1}^n (x_i - y_i)^2} \quad (4)$$

where  $x = (x_1, \dots, x_n)$  and  $y = (y_1, \dots, y_n)$  are points in  $\mathbb{R}^n$ . The distance between two points  $x$  and  $y$  in  $\mathbb{R}^n$  is defined by

$$d(x, y) = \sqrt{\sum_{i=1}^n (x_i - y_i)^2} \quad (5)$$

where  $x = (x_1, \dots, x_n)$  and  $y = (y_1, \dots, y_n)$  are points in  $\mathbb{R}^n$ . The distance between two points  $x$  and  $y$  in  $\mathbb{R}^n$  is defined by

$$d(x, y) = \sqrt{\sum_{i=1}^n (x_i - y_i)^2} \quad (6)$$

where  $x = (x_1, \dots, x_n)$  and  $y = (y_1, \dots, y_n)$  are points in  $\mathbb{R}^n$ . The distance between two points  $x$  and  $y$  in  $\mathbb{R}^n$  is defined by

$$d(x, y) = \sqrt{\sum_{i=1}^n (x_i - y_i)^2} \quad (7)$$

where  $x = (x_1, \dots, x_n)$  and  $y = (y_1, \dots, y_n)$  are points in  $\mathbb{R}^n$ . The distance between two points  $x$  and  $y$  in  $\mathbb{R}^n$  is defined by

$$d(x, y) = \sqrt{\sum_{i=1}^n (x_i - y_i)^2} \quad (8)$$

where  $x = (x_1, \dots, x_n)$  and  $y = (y_1, \dots, y_n)$  are points in  $\mathbb{R}^n$ . The distance between two points  $x$  and  $y$  in  $\mathbb{R}^n$  is defined by

$$d(x, y) = \sqrt{\sum_{i=1}^n (x_i - y_i)^2} \quad (9)$$

where  $x = (x_1, \dots, x_n)$  and  $y = (y_1, \dots, y_n)$  are points in  $\mathbb{R}^n$ . The distance between two points  $x$  and  $y$  in  $\mathbb{R}^n$  is defined by

$$d(x, y) = \sqrt{\sum_{i=1}^n (x_i - y_i)^2} \quad (10)$$



VACUUM CLEANERS - DUST EXTRACTORS

# CYCLONE RANGE

POWER MAX

3500 W

WATER LIFT

2230 mmH<sub>2</sub>O

AIRFLOW

765 m<sup>3</sup>/h



## MOST FREQUENTLY USE

CONSTRUCTION



HEAVY INDUSTRY



## INNOVATIONS



CYCLONE SYSTEM



BLACK IS GREEN™



## CYCLONE SYSTEM

---

### NO LOSS OF SUCTION POWER AND FILTER ALWAYS CLEAN

Unlike other dust extractors, our Cyclone technology allows you to extract dust, sludge and hot mastic without damaging or compromising the cleaning system and the filters life cycle.

A guaranteed high productivity and suction performance until tank capacity is full. Ideal for vacuuming through puddles or extracting fragmented debris.



**LESS CLOGS.  
MORE  
CLEANING.**

---

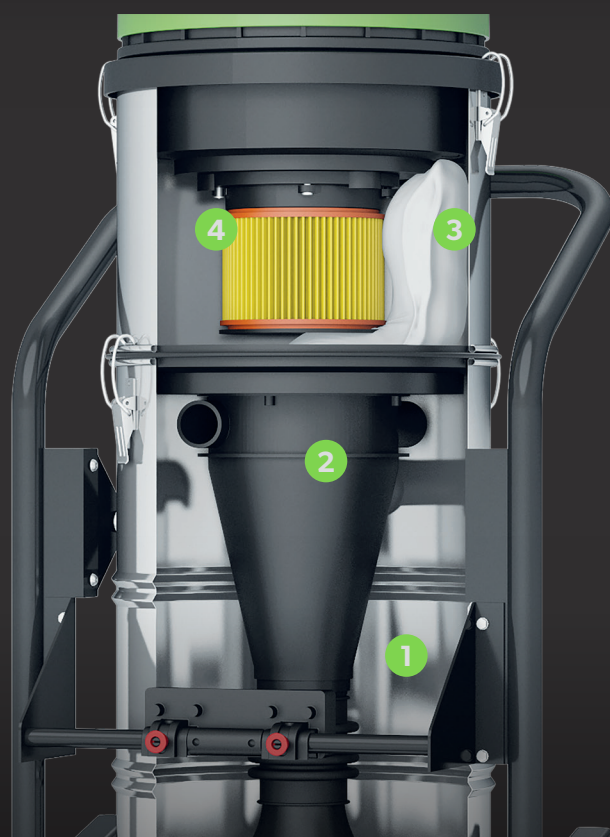
### BENEFITS

- 01 No electronic switches, no sensors and no control panels = no hassle.
- 02 HEPA cartridge will always be clean ensuring the highest filtration efficiency level.
- 03 Decanter facilitates fine dust disposal by simply replacing the microfibre bag without any contact with waste material.
- 04 A specifically designed structure enabling the collection of large volumes of material.



## MULTISTAGE FILTRATION

Ideal to vacuum large quantities of fine dust and debris without clogging the cartridge filter.



## 4 STAGES OF FILTRATION

**1° STAGE**  
THE EXTERNAL OF  
CYCLONE SYSTEM

**2° STAGE**  
THE INTERNAL OF  
CYCLONE SYSTEM

**3° STAGE**  
THE MICROFIBER BAG INSIDE  
THE DECANTER TANK

**4° STAGE**  
HEPA CARTRIDGE

## 4 STAGES OF FILTRATION

- 01 Air, dust and debris are diverted by the deflector during the downward anticlockwise rotation. Heavier debris are collected on the bottom of the tank. The flow returns back to the Cyclone holes.
- 02 The flow descends clockwise into the Cyclone. Finer powder drops on the bottom of the Cyclone and finally goes back.
- 03 Air and dust are filtered by the microfiber bag.
- 04 99.9% Hepa filtration. Hepa filter is always cleaned thanks to Cyclone system.

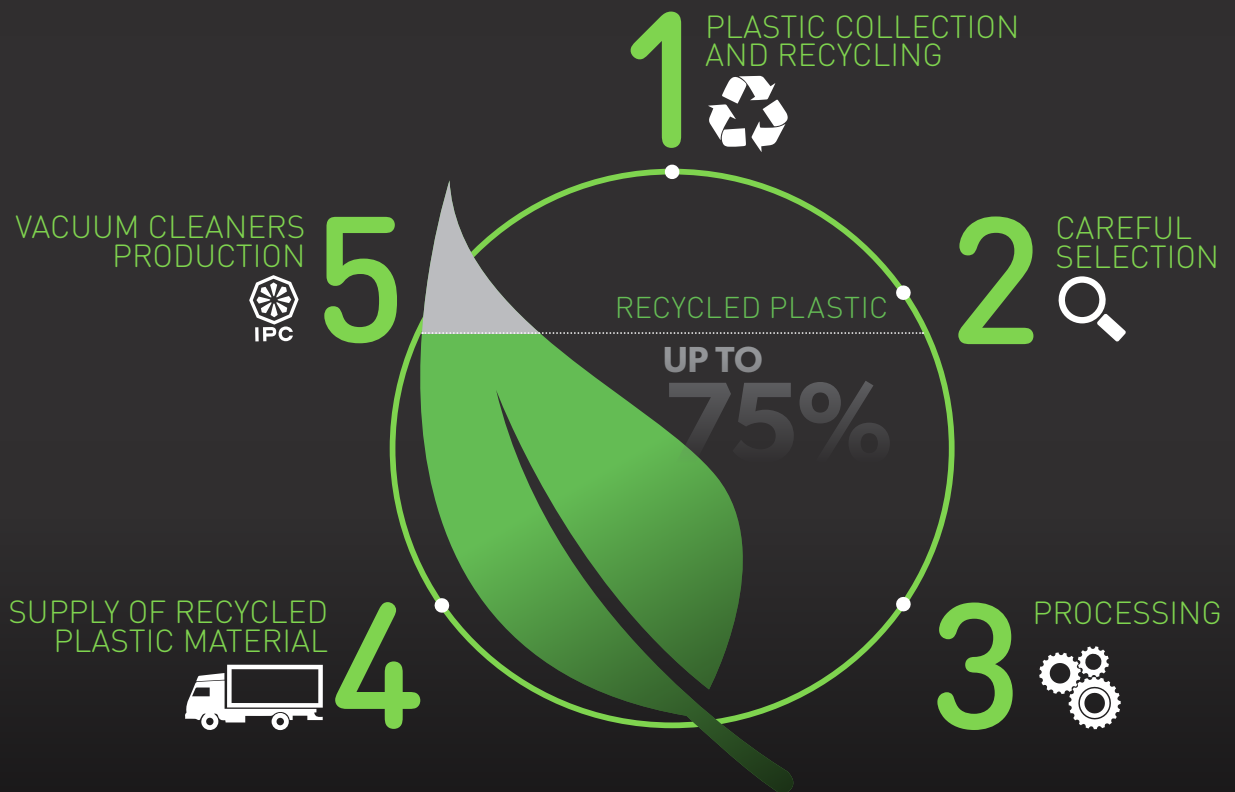


BLACK  
IS  
GREEN™



## UP TO 75% RECYCLED PLASTIC

Our designers have created an innovative and fully equipped product range conceived for professional cleaning. Produced following IPC exclusive technology, these new products are eco-friendly and created using high quality recycled plastic, in order to promote sustainable development and environmental protection.



## BENEFITS

- 01 Black is Green™ recycled plastic is a raw material made of the best and strictly selected plastic waste. Manufactured through an innovative process which guarantees strict quality and safety controls, Black is Green™ plastic has the same features of brand new plastic, but it is eco-friendly because obtained from recycled material.
- 02 Recycled plastic produces no waste, it is recyclable and in compliance with RoHS and REACH guidelines.
- 03 TUV Certified recycling process and production.

## SUGGESTED SECTORS

# CONSTRUCTION



### BRICK/BLOCK AND CERAMICS

- ▶ RESIDUALS FROM WALLS/FLOORS CUTTINGS AND GRINDING
- ▶ SUCTION OF MASONRY SCRAPS
- ▶ CLEANING OF BAGS ACCIDENTAL SPILLINGS

### PRECAST CONCRETE AND BUILDING MATERIALS

- ▶ RESIDUALS FROM WALLS SMOOTHING PROCESSES
- ▶ FLOORS SMOOTHING SCRAPS
- ▶ DISPOSAL OF BULKY MATERIAL

# HEAVY INDUSTRY



### FOUNDRIES AND AGGREGATE/MINING

- ▶ RAW MATERIALS RECOVERY
- ▶ DISPOSAL OF BULKY MATERIAL
- ▶ CLEANING OF CONVEYORS OR PRODUCTION MACHINERY

### GLASS AND FIBERGLASS

- ▶ DUST PRODUCED BY BEAM OR WINDOWS FIXTURES SMOOTHING PROCESSES
- ▶ ACCIDENTAL SPILLINGS RECOVERY
- ▶ GENERAL MAINTENANCE OF PRODUCTION PLANT

## GS 3 MBAG OPT CYC

# NEW

## EXCLUSIVE FEATURES



HEAVY  
DUTY  
TROLLEY

- ▶ MAXIBAG COLLECTION SYSTEM
- ▶ DETACHABLE SYSTEM FOR QUICK REPLACEMENT OF MAXIBAG
- ▶ SELF DISCHARGE VALVE WITH BEST SEALING
- ▶ AISI 430 INDUSTRIAL FRAMEWORK
- ▶ BIG AND BRAKED WHEELS
- ▶ MULTI STAGE FILTRATION
- ▶ ELECTROSTATIC DISSIPATION
- ▶ INNOVATIVE GASKET
- ▶ STRONG HOOKS
- ▶ INDEPENDENT MOTORS WITH LIGHT SWITCHES
- ▶ MICROFIBER BAG
- ▶ HEPA H13 CARTRIDGE 2260 CM<sup>2</sup>
- ▶ RELIABLE COSTRUCTION FOR INTENSIVE USE

## TECHNICAL DATA

		GS 3 MBAG OPT CYC
		ASD013435
Code		
PERFORMANCE		
Usage		DRY
Motor		3
Power	W	3400-3500 max
Voltage	V	220-240
Water lift	mmH <sub>2</sub> O	2230
Airflow	m <sup>3</sup> /h	765
Bag capacity	m	20
Cable length	m	8,5
Filtering surface	cm <sup>2</sup>	2260
Sound Pressure Level (EN 60704-1; EN 60704-2-1; IEC 60335-2-69)	dB(A)	76
Diameter of inlet	mm	60 / metal
Dimensions (LxWxH)	mm	600x620x1727
Weight	kg	56

## SPECS



SELF DISCHARGE VALVE



MAXIBAG COLLECTION SYSTEM



ALUMINIUM INLET



## GS 3/78 OPT CYC

## EXCLUSIVE FEATURES

- ▶ AISI 430 INDUSTRIAL FRAMEWORK
- ▶ BIG AND BRAKED WHEELS
- ▶ MULTI STAGE FILTRATION
- ▶ ELECTROSTATIC DISSIPATION
- ▶ INNOVATIVE GASKET
- ▶ STRONG HOOKS
- ▶ INDEPENDENT MOTORS WITH LIGHT SWITCHES
- ▶ TIPPING TROLLEY
- ▶ DETACHABLE TANK
- ▶ MICROFIBER BAG
- ▶ HEPA H13 CARTRIDGE 2260 CM<sup>2</sup>
- ▶ RELIABLE COSTRUCTION FOR INTENSIVE USE

COMPACT  
STURDY  
TROLLEY



## TECHNICAL DATA

### GS 3/78 OPT CYC ASD015517

Code		ASD015517
PERFORMANCE		
Usage		DRY
Motor		3
Power	W	3400-3500 max
Voltage	V	220-240
Water lift	mmH <sub>2</sub> O	2230
Airflow	m <sup>3</sup> /h	765
Tank Capacity/Material	l	78/steel
Cable length	m	8,5
Filtering surface	cm <sup>2</sup>	2260
Sound Pressure Level (EN 60704-1; EN 60704-2-1; IEC 60335-2-69)	dB(A)	76
Diameter of inlet	mm	60 / conductive plastic
Dimensions (LxWxH)	mm	600x620x1335
Weight	kg	43

## SPECS



STURDY TROLLEY



DETACHABLE TANK



TIPPING TANK

## GS 3/78 CYC



## EXCLUSIVE FEATURES

- ▶ AISI 430 INDUSTRIAL FRAMEWORK
- ▶ MULTI STAGE FILTRATION
- ▶ ELECTROSTATIC DISSIPATION
- ▶ INNOVATIVE GASKET
- ▶ STRONG HOOKS
- ▶ INDEPENDENT MOTORS WITH LIGHT SWITCHES
- ▶ TIPPING TROLLEY
- ▶ DETACHABLE TANK
- ▶ MICROFIBER BAG
- ▶ HEPA H13 CARTRIDGE 2260 CM<sup>2</sup>
- ▶ RELIABLE COSTRUCTION FOR INTENSIVE USE

## TECHNICAL DATA

		GS 3/78 CYC
Code		ASD015516
PERFORMANCE		
Usage		DRY
Motor		3
Power	W	3400-3500 max
Voltage	V	220-240
Water lift	mmH <sub>2</sub> O	2230
Airflow	m <sup>3</sup> /h	765
Tank Capacity/Material	l	78/steel
Cable length	m	8,5
Filtering surface	cm <sup>2</sup>	2260
Sound Pressure Level (EN 60704-1; EN 60704-2-1; IEC 60335-2-69)	dB(A)	76
Diameter of inlet	mm	60 / conductive plastic
Dimensions (LxWxH)	mm	680x620x1110
Weight	kg	33

## SPECS



DETACHABLE TANK



HEPA CARTRIDGE 2.260 CM<sup>2</sup>



CYCLONE SYSTEM

## G3 MBAG CYC



ADJUSTABLE  
HEIGHT  
TROLLEY

WORK POSITION



## EXCLUSIVE FEATURES

- ▶ MAXIBAG COLLECTION SYSTEM
- ▶ DETACHABLE SYSTEM FOR QUICK REPLACEMENT OF MAXIBAG
- ▶ SELF DISCHARGE VALVE WITH BEST SEALING
- ▶ AISI 430 INDUSTRIAL FRAMEWORK
- ▶ BIG AND BRAKED WHEELS
- ▶ MULTI STAGE FILTRATION
- ▶ ELECTROSTATIC DISSIPATION
- ▶ INNOVATIVE GASKET
- ▶ STRONG HOOKS
- ▶ INDEPENDENT MOTORS WITH LIGHT SWITCHES
- ▶ MICROFIBER BAG
- ▶ HEPA H13 CARTRIDGE 2260 CM<sup>2</sup>
- ▶ RELIABLE CONSTRUCTION FOR INTENSIVE USE

## TECHNICAL DATA

		<b>G3 MBAG CYC</b>
Code		ASD015518
<b>PERFORMANCE</b>		
Usage		DRY
Motor		3
Power	W	3400-3500 max
Voltage	V	220-240
Water lift	mmH <sub>2</sub> O	2230
Airflow	m <sup>3</sup> /h	765
Bag capacity	m	20
Cable length	m	8,5
Filtering surface	cm <sup>2</sup>	2260
Sound Pressure Level (EN 60704-1; EN 60704-2-1; IEC 60335-2-69)	dB(A)	76
Diameter of inlet	mm	60 / conductive plastic
Dimensions (LxWxH)	mm	590x590x1770/1440
Weight	kg	42

## SPECS



MAXIBAG COLLECTION SYSTEM



ADJUSTABLE HEIGHT TROLLEY



MICROFIBER BAG PROTECTS THE CARTRIDGE

## CYCLONE PRE-SEPARATOR MAXIBAG



A pre-separator is a **collection device**, simply connected with a vacuum cleaner **to collect more powder and debris** and if the filters in the vacuum are clogging too soon.

Benefits:

- More productivity and powder collection;
- Easier removal, handling and disposal of the debris.

## EXCLUSIVE FEATURES

- ▶ MAXIBAG COLLECTION SYSTEM
- ▶ DETACHABLE SYSTEM FOR QUICK REPLACEMENT OF MAXIBAG
- ▶ SELF DISCHARGE VALVE WITH BEST SEALING
- ▶ AISI 430 INDUSTRIAL FRAMEWORK
- ▶ BIG AND BRAKED WHEELS
- ▶ MULTI STAGE FILTRATION
- ▶ INNOVATIVE GASKET
- ▶ STRONG HOOKS
- ▶ MICROFIBER BAG
- ▶ HEPA H13 CARTRIDGE 2260 CM<sup>2</sup>
- ▶ RELIABLE CONSTRUCTION FOR INTENSIVE USE

## MODE OF OPERATION



## TECHNICAL DATA

Code		CYCLONE PRE-SEPARATOR MAXIBAG	
PERFORMANCE		PMVR06389	
Usage		DRY	
Bag capacity	m	20	
Diameter of inlet	mm	60 / conductive plastic	
Dimensions (LxWxH)	mm	590x590x1570/1240	
Weight	kg	30	

## SPECS



MAXIBAG COLLECTION SYSTEM



ADJUSTABLE HEIGHT TROLLEY



ELBOW

# STANDARD AND OPTIONAL ACCESSORIES

● STANDARD

○ OPTIONAL

**GS 3 MBAG OPT CYC**  
CODE: ASD013435

**GS 3/78 OPT CYC**  
CODE: ASD015517

**GS 3/78 CYC**  
CODE: ASD015516

**G3 MBAG CYC**  
CODE: ASD015518

**CYCLONE  
PRE-SEPARATOR  
MAXIBAG**  
CODE: PMVR06389



CODE: MPVR28723  
**FASTENING PLASTIC RING**

●

●

●

●

●



CODE: FTDP28843  
**HEPA H13 CARTRIDGE**  
2.260 cm<sup>2</sup>

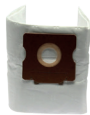
●

●

●

●

●



CODE: FTDP00462  
**MICROFIBER BAG 1 PC**

●

●

●

●

●

CODE: KTRI04795  
**MICROFIBER BAG**  
SET OF 10 PCS

○

○

○

○

○



CODE: MISC00025  
**LONGOPAC**

●

●

●



CODE: TBFX01270  
**CONDUCTIVE FLEXIBLE**  
**HOSE 5 m Ø50/60 mm**

●

●

●

●

○



CODE: LAFN49581  
**COMPLETE ALUMINIUM**  
**DOUBLE WAND Ø50 mm**

●

○

○

○

○



CODE: SPPV01960  
**BRISTLE BRUSH Ø50 mm**

●

○

○

○

○



CODE: SPPV49597  
**RUBBER FLAT LANCE**  
Ø50 mm

●

○

○

○

○



CODE: KTRI02735  
**CONDUCTIVE TOOL KIT**  
Ø38 mm

○

○

○

○

○



CODE: SPPV37133  
**BRISTLE BRUSH Ø38 mm**

○

○

○

○

○



**IP Cleaning Srl**

Viale Treviso 63  
30026 Summaga di Portogruaro (VE) - Italy

Tel. +39 0421 205511 - Fax +39 0421 204227  
info@ipcworldwide.com - www.ipcworldwide.com



**IPC**

